

COLORADO  
RIVER  
OUTFITTERS  
ASSOCIATION

COMMERCIAL RIVER USE  
in the STATE of COLORADO 1988-2019

2019  
YEAR END REPORT

## COMMERCIAL USER DAYS IN THE STATE OF COLORADO 1997 - 2019

River	1997	1998	1999	2000	2001	2002	2003	2004	2005	2006	2007	2008
Animas	37,000	36,000	45,000	29,000	42,000	12,000	34,500	35,470	52,700	42,500	44,322	42,250
Animas - Upper	400	920	989	700	721	300	690	658	872	167	598	533
Arkansas	235,931	250,098	243,709	250,861	252,213	139,178	214,555	203,840	228,091	237,160	239,887	214,234
Blue	5,361	1,300	2,100	2,347	14	0	264	788	1,212	760	2,038	2,906
Clear Creek	11,889	12,908	16,887	13,616	20,798	7,498	24,495	20,115	32,357	36,889	49,190	52,340
Colorado - Glenwood	43,146	59,822	60,191	57,265	55,829	42,581	56,876	58,751	57,712	62,652	65,502	52,738
Colorado - Upper	36,758	40,309	40,000	42,933	34,381	37,801	32,188	33,224	29,449	36,280	37,068	34,769
Colorado - Horsethief - Ruby	4,875	4,171	4,410	4,508	4,188	2,324	3,222	3,383	3,318	2,810	2,761	3,283
Colorado - Westwater	6,614	7,452	7,208	6,859	6,858	6,626	7,352	7,548	7,043	7,233	7,632	7,624
Dolores	2,333	2,406	439	921	0	0	214	174	936	81	195	868
Eagle - Upper	11,738	6,361	7,290	3,830	3,702	0	1,239	858	3,630	4,621	4,390	4,390
Eagle - Lower	2,825	2,226	2,500	2,167	594	446	1,153	820	1,419	1,441	1,369	1,369
Gore Creek - Vail												
Green/Yampa	7,545	7,938	7,360	8,539	7,825	5,617	7,134	6,826	6,627	6,500	5,813	6,235
Gunnison Gorge	3,289	3,155	3,169	3,928	3,401	3,292	2,328	3,010	3,016	3,800	2,826	4,342
Gunnison - Upper (Town Run)	1,774	1,420	1,720	1,400	2,690	1,334	1,590	1,982	2,112	2,212	2,500	2,669
Gunnison - Escalante	2,340	899	1,011	1,884	1,887	1,044	2,113	2,988	3,363	2,265	3,272	2,106
Gunnison - Forks to Austin												
Gunnison - Lake Fork	1,850	1,315	1,848	1,310	1,543	0	160	177	195	165	126	369
North Platte	1,232	804	882	165	137	0	312	191	566	511	372	851
Piedra	31	294	305	50	650	0	210	454	725	400	500	547
Poudre	31,981	32,721	32,446	29,012	34,192	26,004	34,164	31,042	36,088	34,533	37,824	37,566
Rio Grande	3,000	2,800	3,100	1,950	3,300	92	1,300	2,800	3,246	1,605	1,402	2,345
Roaring Fork - Above Basalt	5,074	4,500	5,000	4,500	2,500	0	2,000	1,500	2,215	2,609	2,834	6,187
Roaring Fork - Below Basalt	1,200	1,500	2,000	1,500	1,000	0	500	500	10	79	100	2,500
San Juan - Pagosa	2,680	3,460	3,400	2,200	2,000	138	1,586	2,550	2,500	1,900	1,900	2,280
San Miguel	2,000	2,500	3,442	1,379	3,625	120	1,959	2,212	4,493	2,800	2,943	5,969
South Platte	3,137	3,650	1,306	2,035	2,055	453	935	836	901	655	690	1,150
Taylor	13,612	15,367	15,367	13,989	14,287	11,176	14,734	14,750	14,972	15,127	15,112	14,332
<b>Total User Days</b>	<b>479,615</b>	<b>506,296</b>	<b>513,079</b>	<b>488,848</b>	<b>502,390</b>	<b>298,024</b>	<b>447,773</b>	<b>437,447</b>	<b>499,768</b>	<b>507,755</b>	<b>533,166</b>	<b>506,752</b>
<b>% Change From Previous Year</b>	<b>9.7%</b>	<b>5.6%</b>	<b>1.3%</b>	<b>-4.7%</b>	<b>2.8%</b>	<b>-40.7%</b>	<b>50.2%</b>	<b>-2.3%</b>	<b>14.2%</b>	<b>1.6%</b>	<b>5.0%</b>	<b>1.4%</b>
<b>User Day Change From Previous Year</b>	<b>42,232</b>	<b>26,681</b>	<b>6,783</b>	<b>-24,231</b>	<b>13,542</b>	<b>-204,366</b>	<b>149,749</b>	<b>-10,326</b>	<b>62,321</b>	<b>7,987</b>	<b>25,411</b>	<b>6,984</b>

Sources: National Park Service  
 US Forest Service  
 Bureau of Land Management  
 Local Outfitters  
 Colorado Parks & Wildlife

Compiled By: Kim Callaway, Jody Werner & Brian Ellis  
 For Colorado River Outfitters Assoc.  
 Wilderness Aware Rafting  
 PO Box 1550  
 Buena Vista, CO 81211  
 719-395-2112 / www.inaraft.com

Revised: 4/23/2020

## COMMERCIAL USER DAYS IN THE STATE OF COLORADO 1997 - 2019

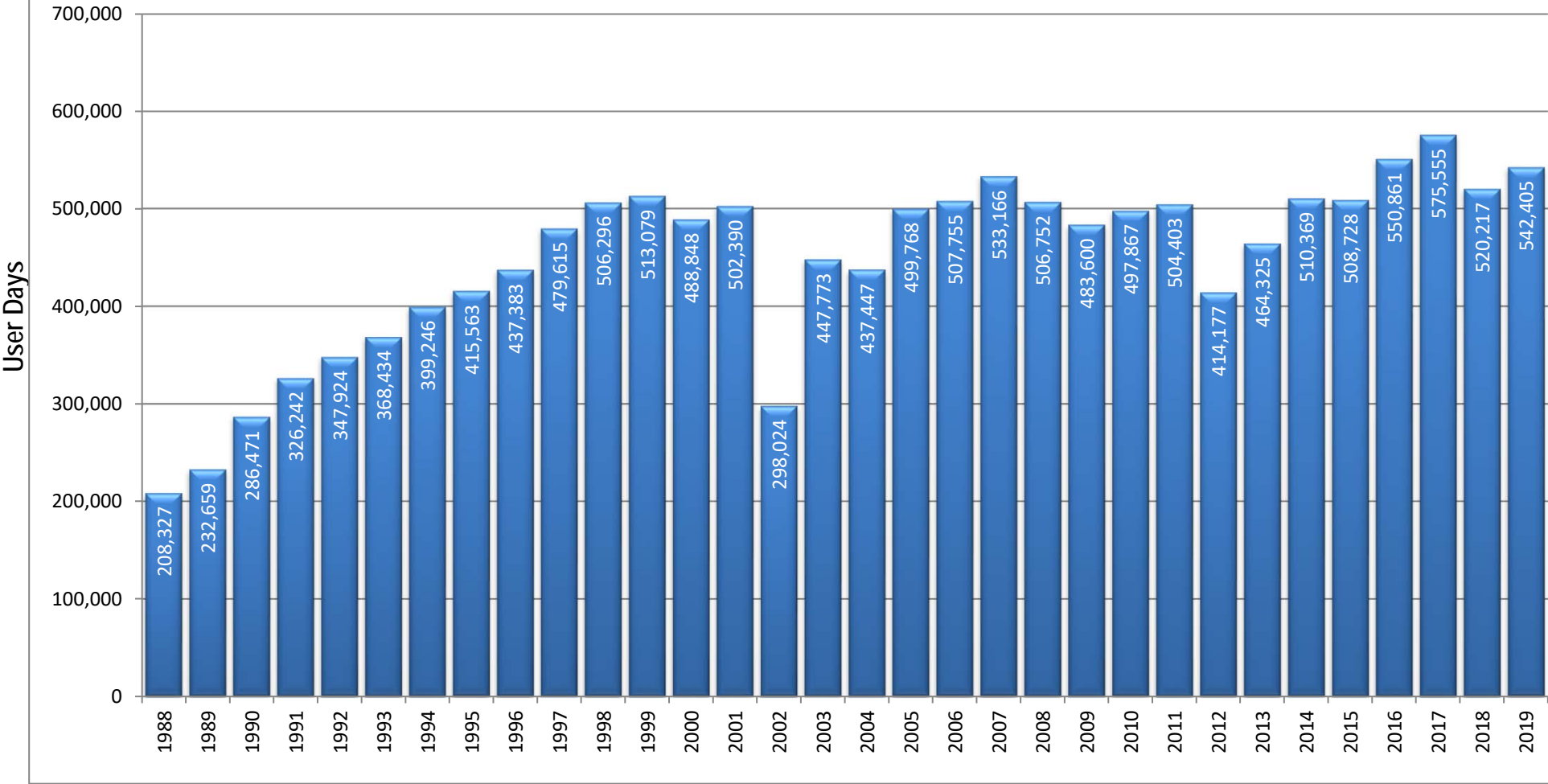
River	2009	2010	2011	2012	2013	2014	2015	2016	2017	2018	2019
Animas	41,921	41,000	45,000	38,000	33,659	37,000	34,117	35,991	34,069	28,495	37,553
Animas - Upper	500	411	411	603	600	678	No report	615	536	71	326
Arkansas	205,876	211,150	208,329	169,486	179,535	191,307	196,998	223,878	223,271	218,120	190,246
Blue	3,089	1,181	6,580	0	0	6,571	6,651	5,301	2,771	1,086	11,006
Clear Creek	50,167	51,301	60,644	35,422	61,172	72,224	65,617	77,783	87,077	66,174	95,063
Colorado - Glenwood	52,737	61,890	44,007	64,086	60,757	56,857	57,785	61,880	64,208	62,181	65,302
Colorado - Upper	33,077	40,730	39,012	41,811	40,420	40,337	41,352	37,071	47,915	50,681	35,777
Colorado - Horsethief - Ruby	3,090	2,718	2,907	3,099	754	3,535	2,787	1,112	3,978	993	1,122
Colorado - Westwater	6,833	7,621	6,069	5,623	6,992	6,432	6,522	6,478	6,522	6,654	7,324
Dolores	536	194	515	35	0	58	26	74	558	0	350
Eagle - Upper (Dowd Chutes)	1,374	1,640	1,286	13	359	1,134	570	606	745	428	399
Eagle (Below Edwards)	1,369	1,710	4,362	227	2,032	5,174	4,971	6,443	6,088	3,549	8,851
Gore Creek - Vail	300	1,000	2,500	900	900	500	404	601	500	0	324
Green/Yampa	4,309	4,803	4,218	7,983	9,694	11,581	11,476	10,196	13,917	15,645	No Report
Gunnison Gorge	3,956	1,390	2,148	1,579	3,431	2,152	3,205	3,584	3,861	4,787	4,039
Gunnison - Upper (Town Run)	2,669	2,669	2,669	1,150	3,387	3,387	3,083	3,276	3,548	3,276	2,129
Gunnison - Escalante	2,549	1,784	2,749	3,028	1,434	1,936	1,154	868	1,088	187	149
Gunnison - Forks to Austin				1,100	303	302	484	305	731	991	1,254
Gunnison - Lake Fork	203	149	284	1,123	221	193	304	259	318	267	245
North Platte	712	482	850	143	265	230	336	179	305	No Report	34
Piedra	547	190	190	54	25	285	No report	337	318	17	249
Poudre	36,991	37,392	37,869	22,780	37,214	37,225	37,934	41,192	38,134	38,741	37,707
Rio Grande	2,313	1,229	1,589	2,103	596	3,691	2,511	2,387	2,694	131	No Report
Roaring Fork - Above Basalt	4,248	2,404	6,672	112	1,696	5,210	5,038	4,377	4,420	560	6,751
Roaring Fork - Below Basalt	1,263	1,366	912	736	458	1,070	895	410	869	831	7,245
San Juan - Pagosa	4,107	4,986	6,171	778	3,475	3,764	4,949	4,850	3,948	1,012	5,517
San Miguel	3,782	1,762	1,900	1,828	1,235	3,921	5,438	5,064	8,097	2,061	9,778
South Platte	750	383	430	484	713	371	473	788	No Report	No Report	No Report
Taylor	14,332	14,332	14,130	9,891	12,998	13,244	13,648	14,956	15,069	13,279	13,665
<b>Total User Days</b>	<b>483,600</b>	<b>497,867</b>	<b>504,403</b>	<b>414,177</b>	<b>464,325</b>	<b>510,369</b>	<b>508,728</b>	<b>550,861</b>	<b>575,555</b>	<b>520,217</b>	<b>542,405</b>
<b>% Change From Previous Year</b>	<b>-4.6%</b>	<b>3.0%</b>	<b>1.3%</b>	<b>-17.9%</b>	<b>12.1%</b>	<b>9.9%</b>	<b>-0.3%</b>	<b>8.3%</b>	<b>4.5%</b>	<b>-9.6%</b>	<b>4.3%</b>
<b>User Day Change From Previous Year</b>	<b>-23,152</b>	<b>14,267</b>	<b>6,536</b>	<b>-90,226</b>	<b>50,148</b>	<b>46,044</b>	<b>-1,641</b>	<b>42,133</b>	<b>24,694</b>	<b>-55,338</b>	<b>22,188</b>

Sources: National Park Service  
 US Forest Service  
 Bureau of Land Management  
 Local Outfitters  
 Colorado Parks & Wildlife

Compiled By: Kim Callaway, Jody Werner & Brian Ellis  
 For Colorado River Outfitters Assoc.  
 Wilderness Aware Rafting  
 PO Box 1550  
 Buena Vista, CO 81211  
 719-395-2112 / www.inaraft.com

Revised: 4/23/2020

# COMMERCIAL USER DAYS IN COLORADO 1988-2019



Sources: National Park Service  
 US Forest Service  
 Bureau of Land Management  
 Local Outfitters  
 Colorado Parks & Wildlife

Compiled By: Kim Callaway, Jody Werner & Brian Ellis  
 For Colorado River Outfitters Assoc.  
 Wilderness Aware Rafting  
 PO Box 1550  
 Buena Vista, CO 81211  
 719-395-2112 / [www.inaraft.com](http://www.inaraft.com)

Revised: 4/23/2020

## ECONOMIC IMPACT OF COMMERCIAL RIVER RAFTING IN COLORADO

YEAR	TOTAL USER DAYS	INFLATION RATE (CPI)	EXPENDITURES- INFLATION ADJUSTED	DIRECT EXPENDETURES	ECONOMIC IMPACT	% CHANGE
1988	208,327		rt	\$14,166,236	\$36,265,564	
1989	232,659	4.6%	\$66.73	\$15,526,325	\$39,747,392	9.6%
1990	286,471	6.1%	\$70.81	\$20,283,592	\$51,925,995	30.6%
1991	326,242	3.1%	\$73.00	\$23,815,666	\$60,968,105	17.4%
1992	347,924	2.9%	\$75.12	\$26,135,007	\$66,905,618	9.7%
1993	368,434	2.7%	\$77.15	\$28,422,900	\$72,762,623	8.8%
1994	399,246	2.7%	\$79.23	\$31,631,493	\$80,976,623	11.3%
1995	415,563	2.5%	\$81.21	\$33,747,364	\$86,393,253	6.7%
1996	437,383	3.3%	\$83.89	\$36,691,478	\$93,930,184	8.7%
1997	479,615	1.7%	\$85.31	\$40,918,247	\$104,750,712	11.5%
1998	506,296	1.7%	\$86.77	\$43,928,838	\$112,457,824	7.4%
1999	513,079	2.7%	\$89.11	\$45,719,334	\$117,041,496	4.1%
2000	488,848	3.4%	\$92.14	\$45,041,209	\$115,305,495	-1.5%
2001	502,390	1.9%	\$93.89	\$47,168,424	\$120,751,166	4.7%
2002	298,024	2.2%	\$95.95	\$28,596,476	\$73,206,978	-39.4%
2003	447,773	1.9%	\$97.78	\$43,781,775	\$112,081,344	53.1%
2004	437,447	3.3%	\$101.00	\$44,183,613	\$113,110,049	0.9%
2005	499,768	3.4%	\$104.44	\$52,194,503	\$133,617,928	18.1%
2006	507,755	2.0%	\$106.53	\$54,089,218	\$138,468,398	3.6%
2007	533,166	4.1%	\$110.89	\$59,124,798	\$151,359,483	9.3%
2008	506,752	0.1%	\$111.00	\$56,251,845	\$144,004,723	-4.9%
2009	483,600	2.7%	\$114.00	\$55,131,275	\$141,136,064	-2.0%
2010	497,867	1.5%	\$115.71	\$57,609,105	\$147,479,308	4.5%
2011	504,403	3.0%	\$119.18	\$60,116,359	\$153,897,880	4.4%
2012	414,177	1.7%	\$121.21	\$50,202,107	\$128,517,393	-16.5%
2013	464,325	1.5%	\$123.03	\$57,124,719	\$146,239,279	13.8%
2014	510,369	0.8%	\$124.01	\$63,291,709	\$162,026,776	10.8%
2015	508,728	0.7%	\$124.88	\$63,529,824	\$162,636,349	0.4%
2016	550,861	2.1%	\$127.50	\$70,236,001	\$179,804,163	10.6%
2017	575,555	2.1%	\$130.18	\$74,925,616	\$191,809,578	6.7%
2018	520,217	1.9%	\$132.65	\$69,008,441	\$176,661,609	-7.9%
2019	542,405	2.3%	\$135.70	\$73,606,640	\$188,432,999	6.7%

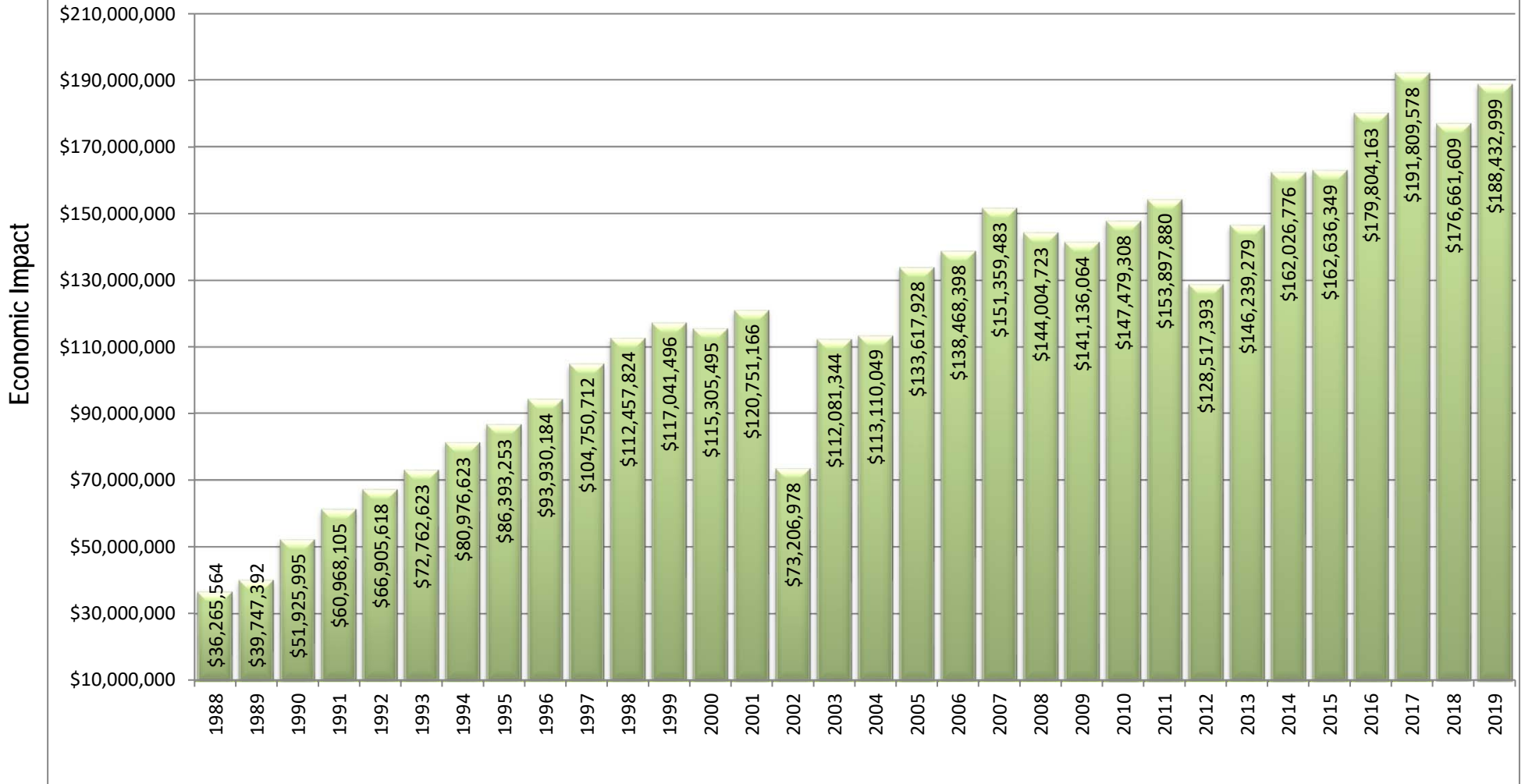
See glossary for above economic impact formulas and sources

Sources: National Park Service  
 US Forest Service  
 Bureau of Land Management  
 Local Outfitters  
 Colorado Parks & Wildlife

Compiled By: Kim Callaway, Jody Werner  
 and Brian Ellis  
 For Colorado River Outfitters Assoc.  
 Wilderness Aware Rafting  
 PO Box 1550  
 Buena Vista, CO 81211  
 719-395-2112 / [www.inaraft.com](http://www.inaraft.com)

# ECONOMIC IMPACT OF COMMERCIAL RIVER RAFTING IN COLORADO

## 1988-2019



Sources: National Park Service  
 US Forest Service  
 Bureau of Land Management  
 Local Outfitters  
 Colorado Parks & Wildlife

Compiled By: Kim Callaway, Jody Werner & Brian Ellis  
 For Colorado River Outfitters Assoc.  
 Wilderness Aware Rafting  
 PO Box 1550  
 Buena Vista, CO 81211  
 719-395-2112 / [www.inaraft.com](http://www.inaraft.com)

Revised: 4/23/2020

## 2019 ECONOMIC IMPACT BY RIVER

RIVER	USER DAYS	DIRECT EXPENDITURES	ECONOMIC IMPACT
Animas	37,553	\$5,096,100	\$13,046,016
Animas - Upper	326	\$44,240	\$113,253
Arkansas	190,246	\$25,817,182	\$66,091,987
Blue	11,006	\$1,493,560	\$3,823,515
Clear Creek	95,063	\$12,900,449	\$33,025,149
Colorado - Glenwood	65,302	\$8,861,756	\$22,686,096
Colorado - Upper	35,777	\$4,855,089	\$12,429,029
Colorado - Horsethief - Ruby	1,122	\$152,260	\$389,786
Colorado - Westwater	7,324	\$993,898	\$2,544,378
Dolores	350	\$47,496	\$121,591
Eagle - Upper	399	\$54,146	\$138,614
Eagle - Lower	8,851	\$1,201,118	\$3,074,862
Gore Creek - Vail	324	\$43,968	\$112,558
Green/Yampa	No Report	Not Available	Not Available
Gunnison Gorge	4,039	\$548,109	\$1,403,160
Gunnison - Upper (Town Run)	2,129	\$288,914	\$739,620
Gunnison - Escalante	149	\$20,220	\$51,763
Gunnison - Forks to Austin	1,254	\$170,173	\$435,643
Gunnison - Lake Fork	245	\$33,248	\$85,114
North Platte	34	\$4,614	\$11,812
Piedra	249	\$33,790	\$86,503
Poudre	37,707	\$5,116,999	\$13,099,516
Rio Grande	No Report	Not Available	Not Available
Roaring Fork - Above Basalt	6,751	\$916,139	\$2,345,316
Roaring Fork - Below Basalt	7,245	\$983,177	\$2,516,933
San Juan - Pagosa	5,517	\$748,680	\$1,916,621
San Miguel	9,778	\$1,326,916	\$3,396,904
South Platte	No Report	Not Available	Not Available
Taylor	13,665	\$1,854,398	\$4,747,259
<b>Totals</b>	<b>542,405</b>	<b>\$73,606,640</b>	<b>\$188,432,999</b>

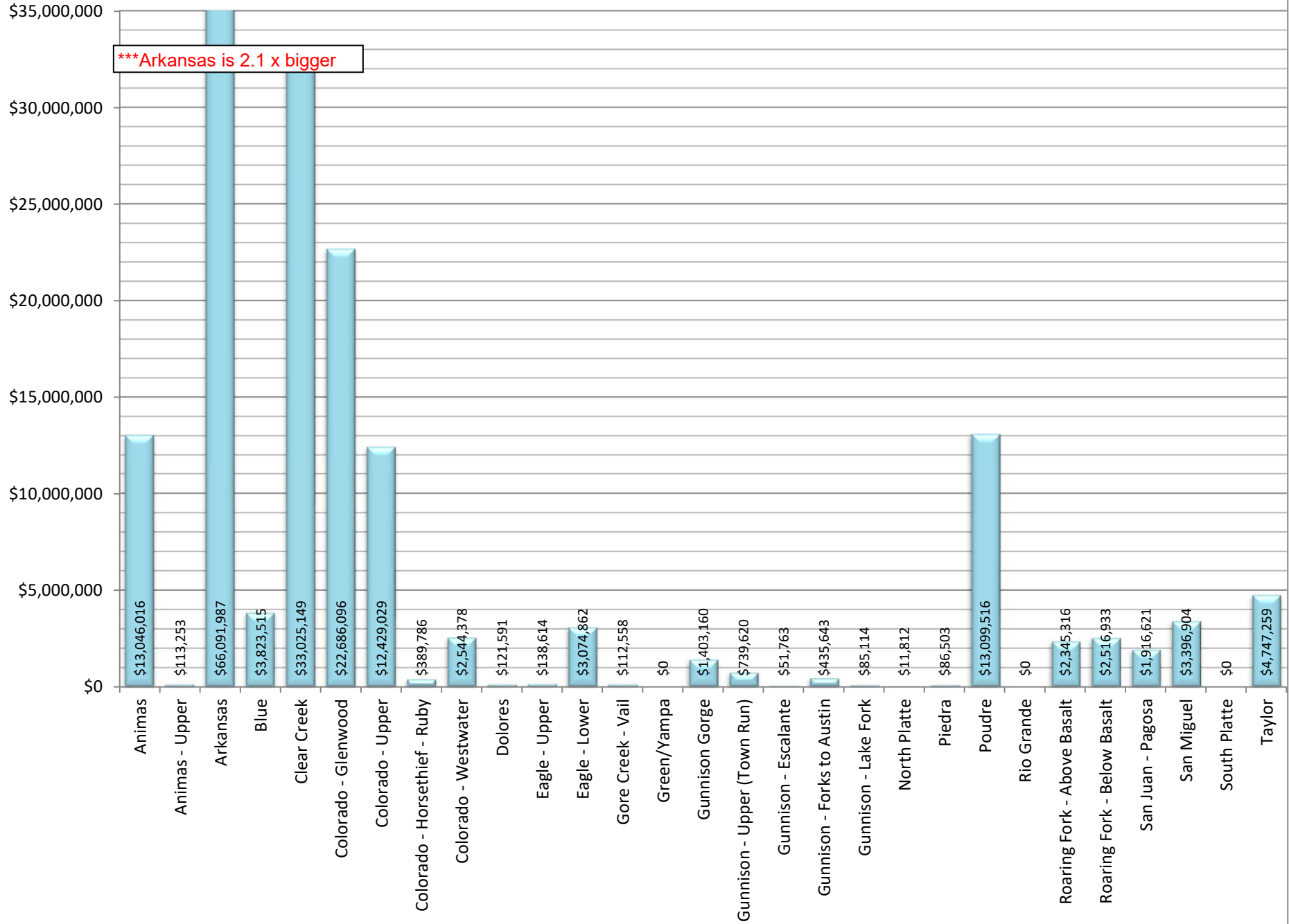
See glossary for above economic impact formulas and sources

Sources: National Park Service  
 US Forest Service  
 Bureau of Land Management  
 Local Outfitters  
 Colorado Parks & Wildlife

Compiled By: Kim Callaway, Jody Werner & Brian Ellis  
 For Colorado River Outfitters Assoc.  
 Wilderness Aware Rafting  
 PO Box 1550  
 Buena Vista, CO 81211  
 719-395-2112 / [www.inaraft.com](http://www.inaraft.com)

Revised: 4/23/2020

# ECONOMIC IMPACT OF COMMERCIAL RIVER RAFTING IN COLORADO - 2019



## INDIVIDUAL RIVER COMMERCIAL RAFTING STATISTICS - 3 YR RANGE

RIVER	2017 USER DAYS	2018 USER DAYS	2019 USER DAYS	% CHANGE '17 - '18	% CHANGE '18 - 19	2017 % MARKET SHARE	2018 % MARKET SHARE	2019 % MARKET SHARE
Animas	34,069	28,495	37,553	-16.4%	31.8%	5.9%	5.5%	6.9%
Animas - Upper	536	71	326	N/A	N/A	0.1%	0.0%	0.1%
Arkansas	223,271	218,120	190,246	-2.3%	-12.8%	38.8%	41.9%	35.1%
Blue	2,771	1,086	11,006	-60.8%	913.4%	0.5%	0.2%	2.0%
Clear Creek	87,077	66,174	95,063	-24.0%	43.7%	15.1%	12.7%	17.5%
Colorado - Glenwood	64,208	62,181	65,302	-3.2%	5.0%	11.2%	12.0%	12.0%
Colorado - Upper	47,915	50,681	35,777	5.8%	-29.4%	8.3%	9.7%	6.6%
Colorado - Horsethief - Ruby	3,978	993	1,122	-75.0%	13.0%	0.7%	0.2%	0.2%
Colorado - Westwater	6,522	6,654	7,324	2.0%	10.1%	1.1%	1.3%	1.4%
Dolores	558	0	350	-100.0%	N/A	0.1%	0.0%	0.1%
Eagle - Upper	745	428	399	-42.6%	-6.8%	0.1%	0.1%	0.1%
Eagle - Lower	6,088	3,549	8,851	-41.7%	149.4%	1.1%	0.7%	1.6%
Gore Creek - Vail	500	0	324	-100.0%	N/A	0.1%	0.0%	0.1%
Green/Yampa	13,917	15,645	No Report	12.4%	N/A	2.4%	3.0%	N/A
Gunnison Gorge	3,861	4,787	4,039	24.0%	-15.6%	0.7%	0.9%	0.7%
Gunnison - Upper (Town Run)	3,548	3,276	2,129	-7.7%	-35.0%	0.6%	0.6%	0.4%
Gunnison - Escalante	1,088	187	149	-82.8%	-20.3%	0.2%	0.0%	0.0%
Gunnison - Forks to Austin	731	991	1,254	35.6%	26.5%	0.1%	0.2%	0.2%
Gunnison - Lake Fork	318	267	245	-16.0%	-8.2%	0.1%	0.1%	0.0%
North Platte	305	No Report	34	N/A	No Report	0.1%	No Report	No Report
Piedra	318	17	249	N/A	N/A	0.1%	0.0%	0.0%
Poudre	38,134	38,741	37,707	1.6%	-2.7%	6.6%	7.4%	7.0%
Rio Grande	2,694	131	No Report	-95.1%	N/A	0.5%	0.0%	N/A
Roaring Fork - Above Basalt	4,420	560	6,751	-87.3%	1105.5%	0.8%	0.1%	1.2%
Roaring Fork - Below Basalt	869	831	7,245	-4.4%	771.8%	0.2%	0.2%	1.3%
San Juan - Pagosa	3,948	1,012	5,517	-74.4%	445.2%	0.7%	0.2%	1.0%
San Miguel	8,097	2,061	9,778	-74.5%	374.4%	1.4%	0.4%	1.8%
South Platte	No Report	No Report	No Report	N/A	N/A	No Report	No Report	No Report
Taylor	15,069	13,279	13,665	-11.9%	2.9%	2.6%	2.6%	2.5%
<b>Totals</b>	<b>575,555</b>	<b>520,217</b>	<b>542,405</b>	<b>-9.6%</b>	<b>4.3%</b>	<b>100.0%</b>	<b>100.0%</b>	<b>100.0%</b>

Sources: National Park Service  
 US Forest Service  
 Bureau of Land Management  
 Local Outfitters  
 Colorado Parks & Wildlife

Compiled By: Kim Callaway, Jody Werner & Brian Ellis  
 For Colorado River Outfitters Assoc.  
 Wilderness Aware Rafting  
 PO Box 1550  
 Buena Vista, CO 81211 / 719-395-2112 / www.inaraft.com

Revised: 4/23/2020

# EXECUTIVE SUMMARY

## COMMERCIAL RIVER USE IN COLORADO

### 2019 Year End Report

Rafting use in the State of Colorado continues to be relatively stable since the big growth years of the 1980's. 2019 commercial rafting use was the third busiest in history with total rafting user days of 542,406. Commercial use in 2019 was up 4.3% or 22,189 user days compared to the previous year. Economic impact measured \$188,432,999 which is the second highest economic impact in history.

The increase in use is mostly due to increased flows from the above average snowpack received the previous winter. Rafting was available throughout the state through September and even some use into October. Use was, however, also severely reduced in May and June due to the unusually wet and cold early summer. Popular resort areas gained river use due to local rivers running past normal ending dates. Seven river segments set use records across the state, with three sections setting near-record use levels. Had the weather been better in the early season, most rivers would have likely set user day records.

Rivers near resort areas setting records include the San Miguel, San Juan, Roaring Fork above and below Basalt, Lower Eagle, Clear Creek and the Blue River. Three rivers in Western Colorado setting near-records include the Gunnison Gorge, Westwater of the Colorado, and the Glenwood section of the Colorado.

The most popular river in Colorado continues to be the Arkansas River which had 190,236 user days. Use on this river has been relatively stable since 2007.

The 2020 season is shaping up to be a mixed blessing. Snowpack across the state is strong with average to above average levels – encouraging optimism for good river flows around the state. That optimism clearly needs to be tempered by the effect of the Corona Virus and social distancing protocols, mandated business closures, and potential erosion of consumer confidence in all facets of the economy.

**The Colorado River Outfitters Association (CROA) compiled this study. Copies are available by contacting Brian Ellis at [rapids@inaraft.com](mailto:rapids@inaraft.com). It can also be downloaded from the web at: <http://www.croa.org/media.html>**

**Members of CROA adhere to a Code of Ethics. Offering quality trips on Colorado's rivers.**

2020 CROA Membership

<b>COMPANY NAME</b>	<b>CONTACT</b>	<b>ADDRESS</b>	<b>CITY, STATE</b>	<b>ZIP</b>	<b>PUBLIC PHONE</b>
A Wanderlust Adventure	Bob Klein	3500 Bingham Hill Rd.	Fort Collins, CO	80521	800-745-7238
AAM's Mild to Wild Rafting	Alex Mickel	50 Animas View Drive	Durango, CO	81301	970.247.4789
American Adventure Expeditions	Michael Kissack	12844 E. Hwys 24/285	Buena Vista, CO	81211	719.395.2409
Arkansas River Tours	Bill Marquis	PO Box 337	Cotopaxi, CO	81223	719.942.4362
Arkansas Valley Adventures	Duke Bradford	PO Box 4310	Buena Vista, CO	81211	970.406.0321
Aspen Whitewater Rafting	Jim Ingram	PO Box 11763	Aspen, CO	81612	970-920-3511
Black Canyon Anglers	Ben Olsen	PO Box 180	Austin, CO	81410	970-835-5050
Blazing Adventures	Evan Cree	PO Box 5552	Snowmass Village, CO	81615	800-282-7238
Blue Sky Adventures	Patrick Drake	PO Box 3195	Glenwood Springs, CO	81601	877-945-6605
Browns Canyon Rafting	Byron Brown	PO Box 1273	Silverthorne, CO	80498	719-275-2890
Clear Creek Rafting Company	John Rice	PO Box 3178	Idaho Springs, CO	80452	303.567.1000
Colorado Adventure Center	Kevin Schneider	1308 CR 129	Glenwood Springs, CO	81601	970.945.6737
Colorado River Center	Otto Andl	PO Box 4258	Edwards, CO	81632	888-888-7238
Colorado Wilderness Rides and Guides	Joshua Baruch	6560 Odell Place, Unit D	Boulder, CO	80304	720-242-9828
Defiance Rafting	Gregory Cowan	1308 County Road 129	Glenwood Springs, CO	81601	970-215-1618
Downstream Adventures	Ryan Snodgrass	107 CR 308	Idaho Springs, CO	80452	303-848-4595
Durango River Trippers	David Moler	724 Main Ave	Durango, CO	81301	970-259-0289
Echo Canyon	Andy Neinas	45000 US HWY 50 N	Canon City, CO	81212	800-748-2953
Elk Mountain Expeditions	James Forester	550 S Riverside Ave	Aspen, CO	81611	970.456.6287
GEO Tours Whitewater Raft Trips	Bruce Becker	PO Box 483	Morrison, CO	80465	303.756.6070
Gunnison River Expeditions	Alan DeGrange	PO Box 2058	Hotchkiss, CO	81419	970.872.3232
Independent Whitewater	Mike Whittington	333 Maxwell	Salida, CO	81201	719.539.7737
Jet Boat Colorado	Joe Keys	PO Box 1080	Clifton, CO	81520	970.644.1121
Journey Quest	Mark Anderson	27077 HWY 50, Ste. #4	Texas Creek, CO	81223	719.276.2227
KODI Rafting	David and Amy Mcrath	PO 5269	Buena Vista, CO	81211	970.668.1548
Liquid Descent	Alan Blado	PO Box 1957	Idaho Springs, CO	80452	970-372-2870
MAD Adventures	Ryan Barwick	PO Box 1329	Winter Park, CO	80482	800-451-4844
Mile Hi Rafting	Matt Hails	PO Box 1744	Lawson, CO	80439	303.567.0717
Mountain Man Rafting	Joel Condren	PO Box 443, 30923 W Hwy 160	South Fork, CO	81154	719.873.0188
Noah's Ark Whitewater Rafting Co.	Rob Williams	PO Box 850	Buena Vista, CO	81211	719.395.2158
OARS and Don Hatch River Expeditions	Tyler Wendt	PO Box 67	Angels Camp, CA	95222	800-346-6277

2020 CROA Membership

<b>COMPANY NAME</b>	<b>CONTACT</b>	<b>ADDRESS</b>	<b>CITY, STATE</b>	<b>ZIP</b>	<b>PUBLIC PHONE</b>
Pagosa Outside Adventures	Toby Rohwer	PO Box 2106	Pagosa Springs, CO	81147	970 264-4202
Performance Tours Rafting	Kevin Foley	PO Box 7305	Breckenridge, CO	80424	970.453.0661
Raft Masters	Dennis Wied	2315 E. Main Street	Canon City, CO	81212	719.275.6645
Rapid Transit Rafting	Craig Stevens/Taylor Ripp	PO Box 4095	Estes Park, CO	80517	970-586-8852
RIGS Fly Shop and GUIDE SERVICE	Tim Patterson	PO Box 2086	Rigeway, CO	81432	970.626.4460
Rimrock Adventures	Travis Baier	PO Box 608	Fruita, CO	81521	970.858.9555
River Runners	Jon Donaldson	24070 C.R. 301	Buena Vista, CO	81211	719.395.2466
Rocky Mountain Adventures	Kyle Johnson	1117 N US Hwy 287	Fort Collins, CO	80524	970.493.4005
Rocky Mountain Whitewater Rafting	Ron Raudelunas	1313 Idaho St	Idaho Springs, CO	80452	303.900.4802
Royal Gorge Rafting & Zipline Tours	James Whiteside	45045 US HWY 50	Canon City, CO	81212	719.275.7238
Sage Outdoor Adventures	Daryll Bangert	PO Box 460	Wolcott, CO	81655	970-476-3700
Scenic River Tours	Ches Russell	PO Box 271	Almont, CO	81210	970.641.3131
The Adventure Company	Mark Hammer	12847 US-24	Buena Vista, CO	81211	800-497-7238
Three Rivers Resort and Outfitting	Mark Schumacher	PO Box 339	Almont, CO	81210	970.641.1303
Vail Valley Anglers	John Cochran	97 Main Street	Edwards, CO	81632	970-926-0900
Western Anglers Guide Service LLC	Ned Mayers	413 Main Street	Grand Junction, CO	81501	970-244-8658
Wilderness Aware	Brian Ellis	PO Box 1550	Buena Vista, CO	81211	719.395.2112
Whitewater Rafting	Phoebe Larsson	PO Box 2462	Glenwood Springs, CO	81602	970-945-8477

## 2019 Report Providers

Name	Address1	City	State	Zip	Contact Person	Phone	EmailAddress	River(s)
USFS - Animas	PO Box 439	Bayfield	CO	81122	Kathryn "Christy" Garro	(970) 884-1438		Upper Animas, Piedra
AHRA	307 W Sackett St	Salida	CO	81201	John Kreski	(719) 539-7289	john.kreski@state.co.us	Arkansas
USFS - Blue River	PO Box 620	Silverthorne	CO	80498	Jackie Brown	(970) 468-5400	jbrown05@fs.fed.us	Blue River
USFS- Glenwood Canyon	PO Box 720	Eagle	CO	81631	Robert Rodriguez	(970) 827-5154	rtrodriguez@fs.fed.us	Glenwood Canyon, Upper Eagle at Dowd Chutes
USFS - Eagle/Holy Cross	24747 Highway 24	Minturn	CO	80443	max Forgensi	970.827.5157	mforgensi@fs.fed.us	Upper Eagle
BLM Kremmling	PO Box 68	Kremmling	CO	80459	Shane Dittlinger	(970) 724-3027	kdittlinger@blm.gov	Upper colorado
BLM Grand Junction	2815 H Road	Grand Junction	CO	81506	Kimberly Leitzinger	(970) 309-0348	kleitzinger@blm.gov	Lower Gunnison (Escalante), Colorado between State Bridge and Debeque(Glenwood Canyon) (, Middle Dolores
BLM Moab	82 E. Dogwood Ste G	Moab	UT	84532	Jennifer Jones	(435) 259-2136	jjones@blm.gov	Colorado River - Westwater, Lower Dolores, Horsethief/Ruby
BLM - Tres Rios	29211 Hwy 184	Dolores	CO	81323	Justin Hunt	(970) 882-7296	j1hunt@blm.gov	Upper Dolores
Colorado River Valley Field Office	2300 River Frontage Rd	Silt	CO	81652	Kim Miller	(970) 876-9075	kmiller@blm.gov	Lower Eagle, Lower Roaring Fork, Colorado State Bridge down (Glenwood Canyon)
Dinosaur National Monument	4545 Hwy 40	Dinosaur	CO	81610	Mark Wilson	(970) 374-3020	mark_wilson@nps.gov	Green, Yampa
BLM Montrose	2505 S. Townsend	Montrose	CO	81401	Tatyana Sukharnikova	(970) 240-5337	tsukharnikova@blm.gov	Gunnison Gorge, San Miguel, Lower Gunnison (Escalante) , Gunnison - Forks to Austin
BLM Gunnison	216 N. Colorado	Gunnison	CO	81230	Jim Lovelace	(970) 642-4940	jlovelac@blm.gov	Gunnison - Lake Fork
USFS - N. Platte	PO Box 241		WY	82331	Travis Ownes	307.256.2501	travis.owens@usda.gov	North Platte
USFS - Ft Collins	2150 Centre Ave Bldg E	Ft. Collins	CO	80526	Steve Kittrell Jane Gordon	(970) 295-6723	skittrell@fs.fed.us; jane.gordon@usda.gov	Poudre
Clear Creek Rafting	PO Box 3178	Idaho Springs	CO	80452	Dale Drake, Lindsey Hansen	(303) 567-1000	dale@clearcreekrafter.com	Clear Creek - collect data from each company
Pagosa Outside	PO Box 2106	Pagosa Springs	CO	81147	Tobi Rohwer	(970) 264-4202	info@pagosaoutside.com	San Juan / Pagosa - collect from each company
SUFS - Grand Mesa	216 N Colorado St	Gunnison	CO	81230	Emily Nutgrass (Peters)	970.641.0471	epeters@fs.fed.us	Taylor, Gunnison - Upper (town run)
Divide Ranger District	PO Box 270	Creede	CO	81130	Devon Cotsamire	(719) 658-2556	dcotsamire@fs.fed.us	Rio Grande
Pitkin County Open Space & Trails	530 E Main St 3rd Floor	Aspen	CO	81611	Janet Urquhart	(970) 920-5232	janet.urquhart@pitkincounty.com	Upper Roaring Fork,
Mild to Wild	50 Animas View Dr	Durango	CO	81301	Alex Mickel	(970) 247-4789	info@mild2wildrafting.com	Animas
Sage Outdoors	PO Box 3481	Vail	CO	81658	Cole Bangert	(970) 845-7238	info@lakotariver.com	Gore Creek